

## Ordenswald 2

(placed am durch pepenipf)

**Stadt:** Lachen Speyerdorf

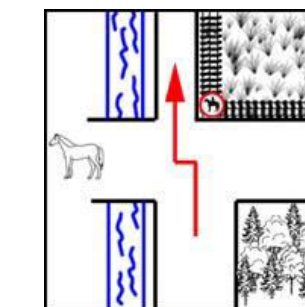
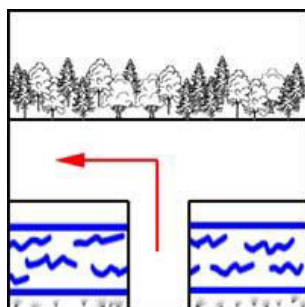
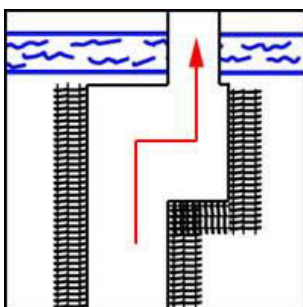
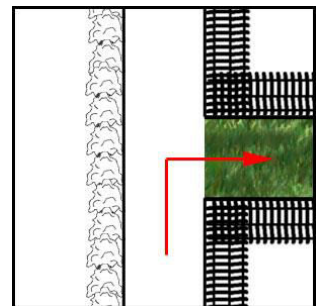
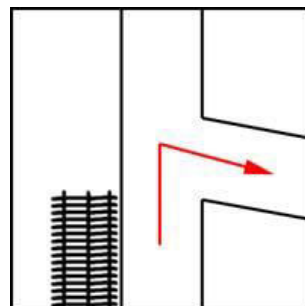
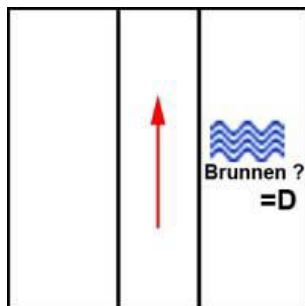
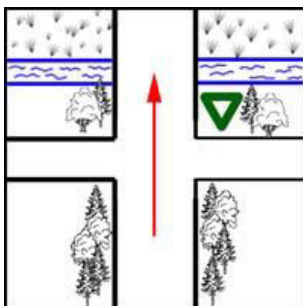
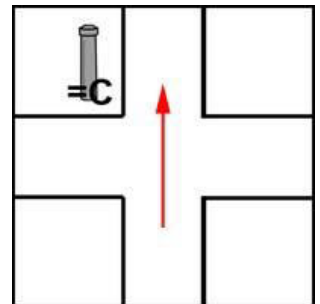
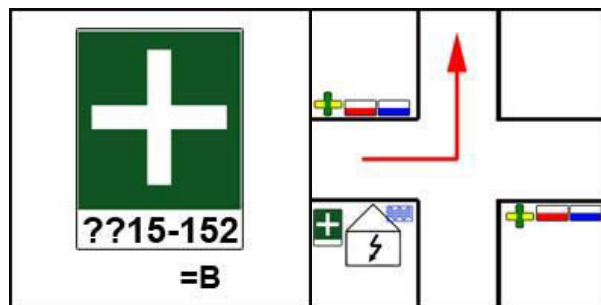
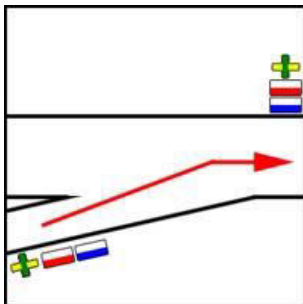
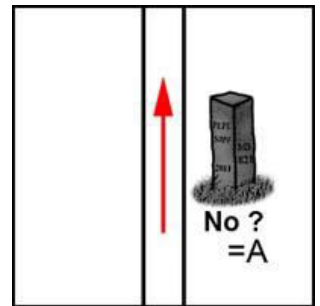
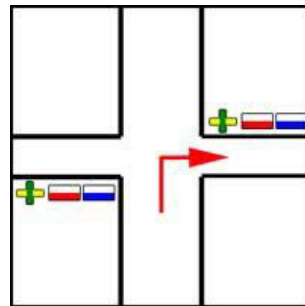
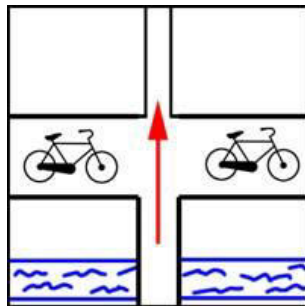
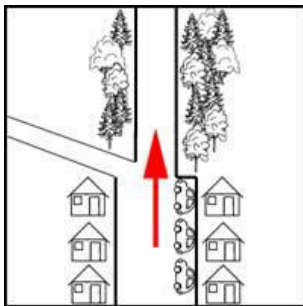
**Start:** Stellt euer Letterboxmobil vor den Häusern „[Ritterbüschel 114 bzw. 116](#)“ ab

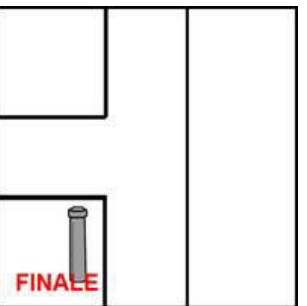
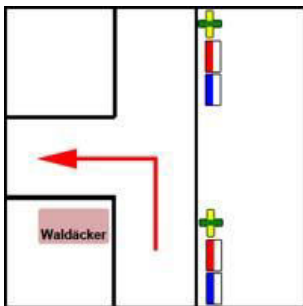
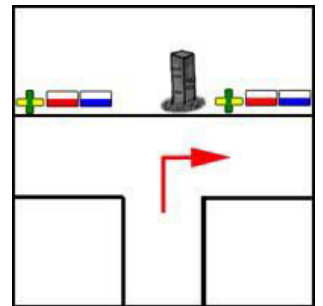
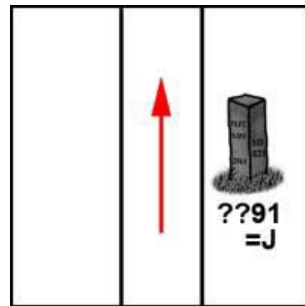
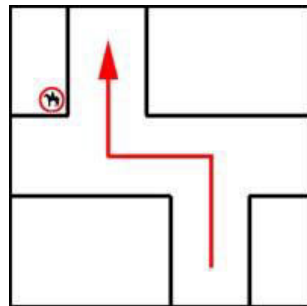
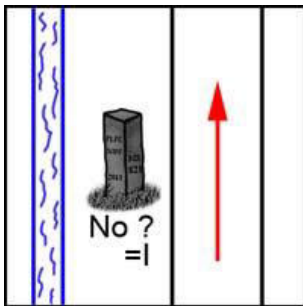
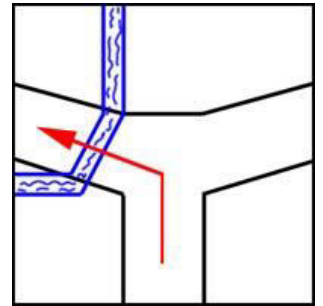
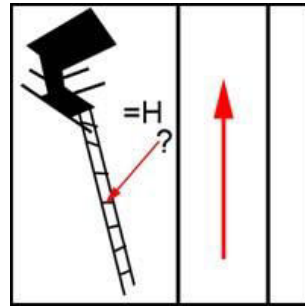
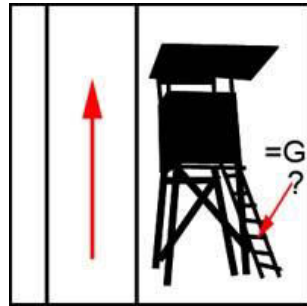
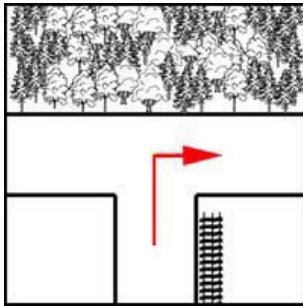
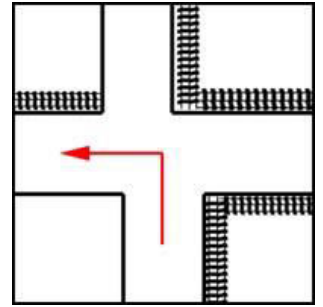
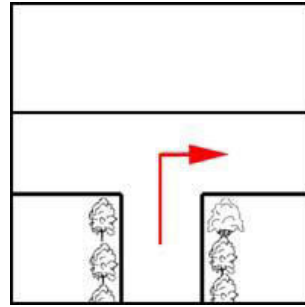
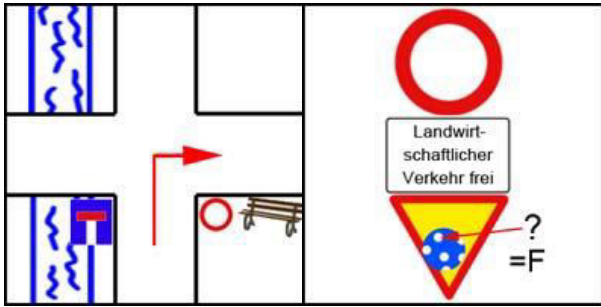
**Länge:** ca. 9 km, ca. 3 Stunden

**Landkarte:** keine notwendig

**Info:** Es ist nicht jede Kreuzung (nur solche wo etwas passiert) und nicht alles an dem jeweiligen Punkt dargestellt, aber das wichtigste, so dass der Punkt/die Kreuzung eindeutig zu erkennen sein sollte...

### CLUE:





A	B	C	D	E	F	G	H	I	J

## FINALE

Rücken zum Pfosten. B \_\_ Schritte in  $(C+F)*D$  \_\_°

A+G \_\_° E\*H-D \_\_ Schritte

I+J+F \_\_° J+D+C \_\_ Schritte

## RÜCKWEG

